

The Evolution4K™ Recorder

4K UHD Medical Video Recorder Solution

The Med X Change, Inc. Evolution4K offers the latest in 4K UHD video recording in a compact device all while delivering brilliant 4K UHD video quality designed for both Apple and Windows editing. There are two available variations; the first with HDMI 2.0 50/60Hz input and HDMI 2.0 50/60Hz output (for 4K medical camera pass-through). The second variation has 4K quad SDI input and 4K quad SDI output, supporting both 4K Square Division and Two Sample Interleave (2SI). Both variations also accept 1080p HD resolution if a 4K medical camera is not connected.



4K
HD

As an embedded Linux device, the Evolution4K allows the users to enter patient data, capture 4K UHD video and 4K still images, playback 4K video, auto print to medical grade printers and record to dual USB 3.0 external hard drives or flash drives. The device is compliant to medical foot pedals (RS-232), 4K surgical microscope and 4K endoscope cameras (2x 3.5mm triggers), encrypts all ePHI data at rest and in transit and can store cases on a large internal hard-drive.

The device can be controlled via an integrated 12.7cm capacitive multi-touch screen that uses swipe and pinch and zoom gestures similar to the latest mobile devices.

MEDICAL CERTIFICATIONS

IEC 60601-1:2012 (Ed 3.1)

IEC 60601-1-2:2014 (Ed 4.0)

No. U8 18 05 74193 030

MEDXCHANGE
MEDXCHANGE.COM

4K UHD & HD VIDEO/STILL IMAGE RECORDING

- Two Models: **HDMI 2.0** (1, EVO4K100) or **3G-SDI** (4, EVO4K200)
- 4K UHD 60Hz input: **HDMI 2.0** (1) or **3G-SDI** (4)
- 4K UHD 60Hz output: **HDMI 2.0** (1) or **3G-SDI** (4)
- 4096x2160p or 3840x2160p 50/60Hz
- 4K UHD recorded/captured files: H.264, .mp4, JPEG, PNG

INTEGRATED 12.7CM TOUCH LCD SCREEN

- Control entire software from integrated touch screen
- Multi-touch/swipe interface
- Duplicate the internal 12.7cm touch screen to any HID touch monitor via VGA

PATIENT DATA ENTRY/WORKFLOW

- Enter patient data, filter patients and start cases
- Sort by fields (*Name, Case date, Patient ID*)
- Append to completed cases

ONE TOUCH RECORDING

- Record 4K UHD Video and capture still images simultaneously with integrated 12.7cm touch screen, endoscopy camera head buttons, microscope triggers, foot pedal, etc.
- Record to internal hard drive and 2 USB 3.0 locations simultaneously

DICOM INTEGRATION

- Automatic DICOM c-store (*PACS storage*) & c-find (*MWL*)

LIVE VIDEO STREAMING OVER IP

Live stream camera video over IP via RTSP protocol

PRINTING/PLAYBACK/COPY/REVIEW

- Review completed cases
- Playback video/stills and copy to external USB/Network
- Auto print to Sony UP-DR80MD medical grade printer
- Adjustable printer enhancements settings

STORAGE, SETTINGS, OTHER

- 1TB Internal storage (*Approx. 20 Hours 4K UHD video*)
- Networking, media and printing settings
- Simple USB software updates
- Embedded Linux OS

EXTERNAL TOUCH MONITOR SUPPORT

- Multiple HID Touch Screens are supported via USB
- Duplicate the internal 12.7cm Touch Screens to a external Touch monitor via the Secondary Display Ports (*DP, HDMI or VGA*)



LIVE VIDEO



WORK LIST



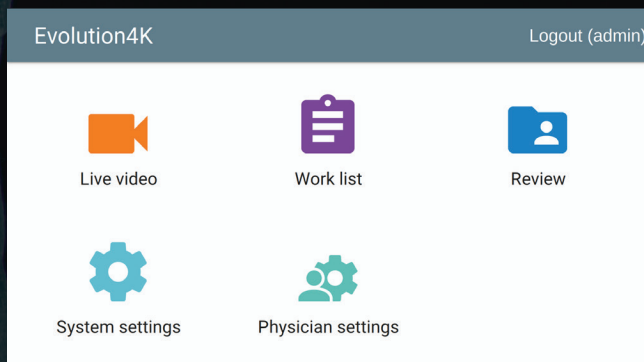
REVIEW



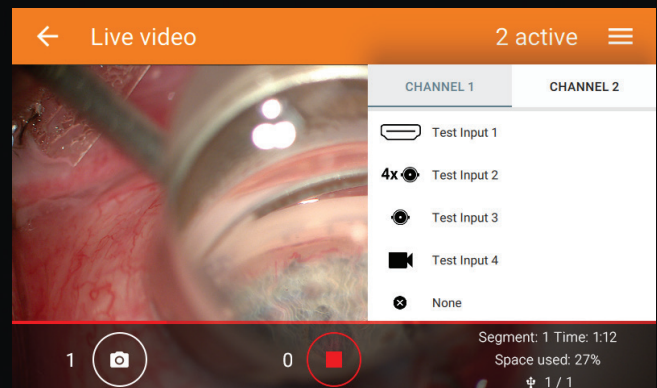
SYSTEM SETTINGS



USER SETTINGS



Home



Live video tab

TYPICAL SUPPORTED CAMERA/VIDEO RESOLUTIONS

- 4K & 4K UHD: 4096x2160p & 3840x2160p
- HD: 1080p, 1080i, 720p
- 4K & 4K UHD Hz: 60, 59.94, 50
- 1080p Hz: 60, 59.94, 50
- 1080i Hz: 60, 59.94, 50
- 720p Hz: 60, 59.94, 50
- 3D HD Side by Side: 1080p, 1080i, 720p
- 3D HD Top/Bottom: 1080p, 720p

STILL IMAGE CAPTURE

- 4K: 4096 pixels (H) x 2160 pixels (V) = 9MP
- UHD: 3840 pixels (H) x 2160 pixels (V) = 8MP
- HD: 1920 pixels (H) x 1080 pixels (V) = 2MP

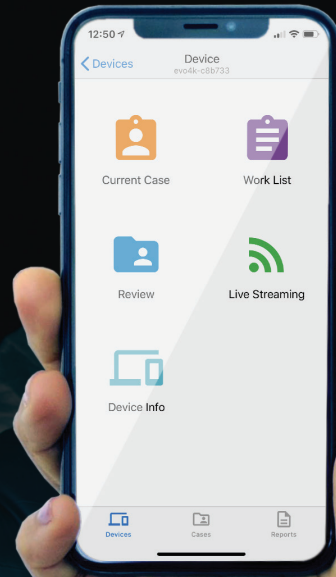
3D HD RECORDING

- Accepts and records 3D HD via HDMI input at Side by Side or Top/Bottom formatting *

* The video coming in via HDMI must already be multiplexed to 3D formatting via a 3D Multiplexer device.

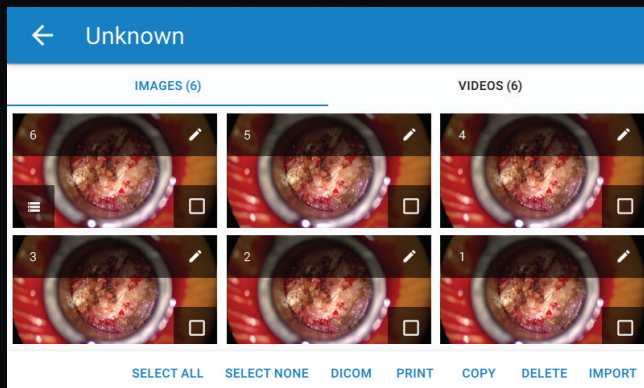
CYBERSECURITY COMPLIANCE

- Audit logging/controls
- Individual user accounts
- Admin role
- User account management
- ePHI is encrypted at rest and in transit using AES-256
- Session timeout
- HIPAA Compliance encryption, auditing, logs, user/admin roles

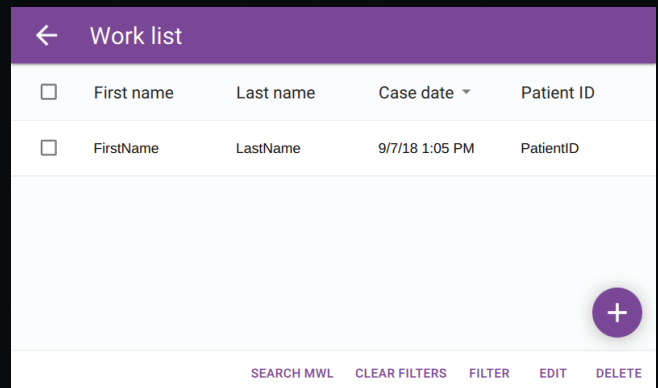


MEDXSTREAM PLUS iOS APP

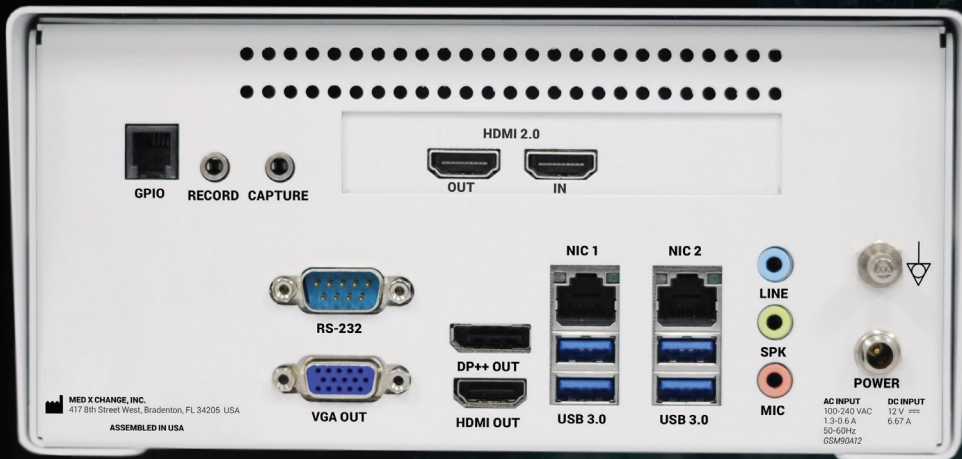
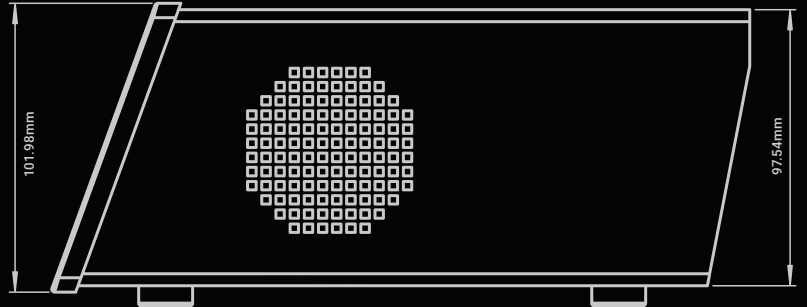
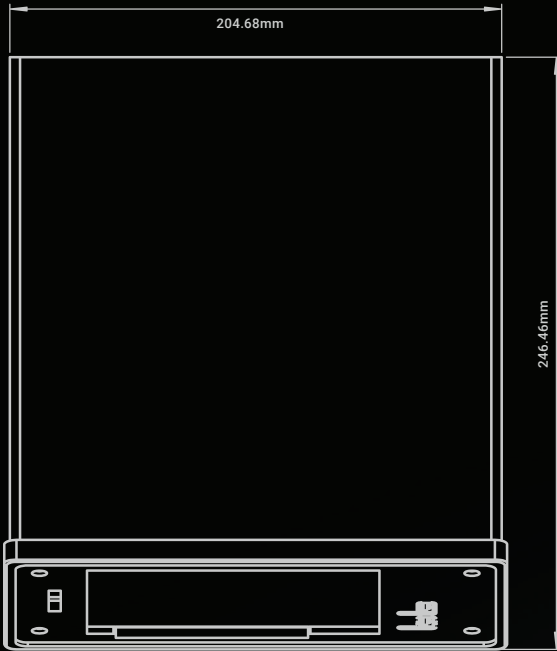
- Wirelessly control some recorder functions
- Encrypted WiFi connection
- Wireless/wired (lightning cable) transmission of still images/videos



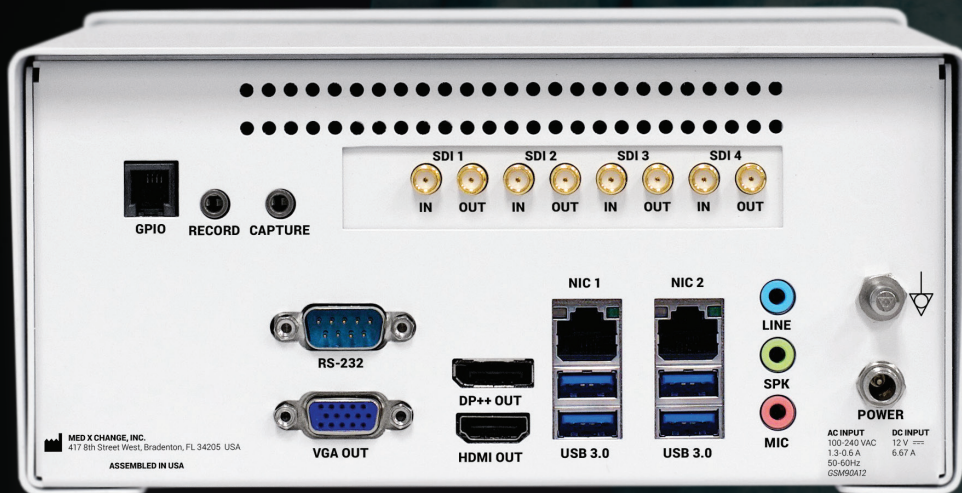
Review tab



Work list tab



EVO4K100 (1 - HDMI 2.0)



EVO4K200 (4 - 3G-SDI)

ACCESSORY PACK CONTENTS

- 1 - User Manual download card
- 1 - 6' Medical grade power cable
- 1 - Wired keyboard
- 1 - AC/DC Medical grade power supply
- 1 - 6' HDMI cable (EVO4K100 only)
- 4 - 6' 3G-SDI cables (EVO4K200 only)
- 2 - 3.5mm Stereo cables



INSPIRE MEDITECH PRIVATE LIMITED
 407 Red Rose Building 49-50
 Nehru Place New Delhi-110019
 Office +91-11-26284578
 H/P +919811078156,+919313899647
 sales@inspiremeditech.com
 www.inspiremeditech.com



MEDXCHANGE.COM
 sales@medxchange.com
 +1 941.794.9977

© 2018 Med X Change, Inc.
 All Rights Reserved.

ISO 13485 Certified

U5020-05, 5.0